

Track everything to enable

# real-time visibility, connected data & better decision-making

on an enterprise scale



## IntelliTrack® enterprise asset tracking platform's capabilities & use cases, explained

Leaders across enterprise organizations share the common challenges of minimizing downtime, waste, and losses while improving efficiency and accuracy. Success demands accurate tracking of assets, inventory,

maintenance, and depreciation—and that requires access to real-time data across locations, business units, and departments.

Enterprise-level asset tracking calls for a solution that's capable of handling complexity. And yet, many businesses still rely on a patchwork of spreadsheets, databases, applications, and printed forms—a mishmash that leads to inaccurate data, disconnected business units, and wasted time and money.



## Complex demands

shouldn't have to compete for attention

The number and complexity of items and information tracked at the enterprise level can be staggering:

- **Fixed assets:** Vehicles, machinery, equipment, and tools require accurate tracking of location, status, usage, maintenance, condition, and depreciation
- **IT assets:** Devices like rugged mobile and handheld devices, scanners, printers, and wearables require monitoring for issues, location, repairs, service contracts, and lifecycle status
- **Rotational assets:** Shared equipment, rentals, reservations, and check-in/check-out items need seamless tracking
- **Consumables:** Supplies like labels, boxes, shrink wrap, straps, scissors, tape, glue, lighting components, printer cartridges, and office supplies demand close monitoring and proactive reordering to prevent operational disruptions
- **Mailroom shipments:** Packages and business-critical orders need timely delivery and accurate tracking across departments and business units

Now, take that complexity and multiply it by locations or business units, add complicated software integrations, and divide by diverse stakeholders' needs for detailed answers to specific questions, all at the same time, in real time.

From Operations and IT to Procurement and Finance, critical business decisions call for comprehensive, accurate data, and fast answers. Smooth-running operations depend on accurate knowledge of the whereabouts, usage, and maintenance status of every device, tool, and asset.

**And there can only be one truth.**





## Data insights

only matter if and when you can use them

Imagine what could be possible if a single inventory management and asset tracking solution could track it all and deliver transparent, real-time data, enterprise-wide, in a way that meets the needs of every organizational role.

And what if that asset tracking platform came with pre-built integrations to work with major device OEMs and open APIs, ready to connect to your existing data sources?

And if you knew just by choosing the platform, you'd always have access to the latest version updates—and your data would be secure and protected?

A carefully selected and implemented enterprise-level asset and inventory tracking solution delivers the right insights to the right people at the right time—which is always right now.

### **DecisionPoint Technologies' IntelliTrack<sup>®</sup> platform is that asset tracking solution.**

IntelliTrack helps enterprise organizations achieve greater efficiency, accuracy, and connection using secure cloud computing and built on a microservices architecture, making deployment faster and more flexible for complex operations—and ensuring timely updates.



## IntelliTrack handles enterprise-wide tracking demands, in one place and on one platform:

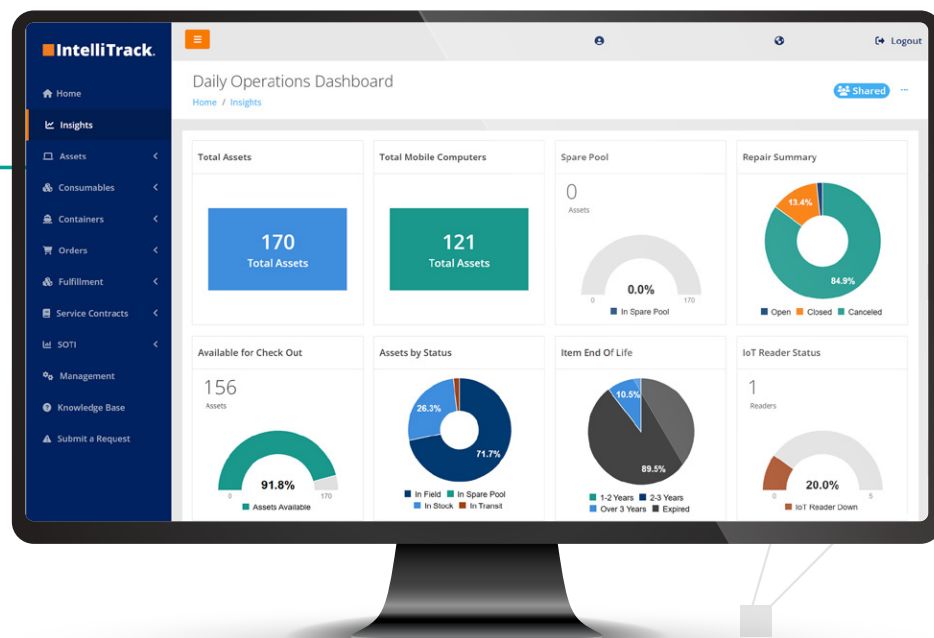
**IT asset locations, repairs, service contracts, and health.** Effective tracking of mobile handheld computers, printers, scanners, RFID equipment, and similar items delivers valuable insights into service contracts, RMAs, and device repair data.

**Assets with check in and check out and tracked maintenance.** Anything that can be checked in, checked out, or reserved, used, and returned requires close attention. Visibility into the status of rotational assets, maintenance and calibration jobs—and their impact on consumables inventories—is critical to prevent downtime and optimize efficiencies. And automatic updates to maintenance and calibration schedules help ensure no equipment or assets are left behind in planning.

**Fixed asset inventory and values.** For Ops or Facilities, it should be quick and easy to account for assets like equipment, fleet vehicles, fixtures and tools—and it should be just as easy to monitor and report on depreciation.

**Consumables inventories.** Tracking consumables can be overwhelming, but failure to manage inventory quantities is a recipe for disaster. These basics can be critical to day-to-day operations—and easily subject to shrink or loss.

**Mailroom deliveries.** Enterprise organizations can struggle to streamline management of internal and external packages, provide real-time visibility into shipment status, and ensure accurate delivery across departments.







# Here's how visibility

makes the difference

Comprehensive and detailed asset and inventory data can transform employees' day-to-day effectiveness and reduce frustrations. Here's how comprehensive visibility can impact leaders in these roles:

## Operations

Improve budgeting for **General managers**, **Regional managers**, and **Operations managers** at specific sites, with access to level-appropriate data ranging from site-specific to enterprise.

## IT service management

Drive the IT service organization forward with enterprise-wide insights, device health and security details, and contact updates. Vital for refresh budgeting.

## IT onsite supervisor

Ensure IT supervisors meet all production SLAs.

## CFO / Finance executive

Plan future years' enterprise budgets based on trending data.

## Finance manager

Plan for refresh, replenishment, and future year budgeting based on data trends.

## Site-level finance

Use location-specific data trends to plan refresh, replenishment, and future year budgets.

## Procurement

Get a clear view of all assets and inventory across an organization, in one place.

## Frontline and edge workers

Empower employees on the ground with accurate, real-time data to make informed decisions, address customer needs, reduce downtime, and maintain operational flow.



## Platform + bundle configurations:

IntelliTrack use cases



### Asset management

#### Challenge:

An Ops manager at one location within an enterprise organization needs to be able to manage mobile devices and hardware at that location, plus manage an inventory of consumable supplies in order to accurately report back to the global team for timely replenishment.

#### Solutions:

The IntelliTrack platform configured with IT asset and consumable inventory bundles enables this Ops manager to track and manage all assets and consumables inventory in one place.

#### Suggested add on:

By adding rotational assets to the platform, he could also benefit from check in / check out functionality to monitor shared devices, equipment, and tools.



## Equipment check-out & check-in

### Challenge:

A Retail ops manager responsible for a large retailer's top-performing stores needs to know which IT assets, and how many, are in each store; how many are out for repair; and which employees are using the remaining in-service devices.

### Solutions:

By pairing IT assets and rotational assets bundles, she can handle all IT hardware management, repairs, and statuses, hardware service contracts, and user check outs—plus, she can see details at both the individual store level as well as across all the stores she manages to optimize the retailer's device utilization.

### Suggested add on:

If she chooses to add consumable inventory and fixed assets, she can also track consumables like mobile device batteries, as well as larger assets like computers and monitors, all within the same IntelliTrack platform.

## Transform inventory and asset tracking

Automate & simplify device onboarding with VeriMy™

VeriMy verifies users and automates device check-out and check-in to streamline and secure logins and chain of custody tracking:

- Automatically configure and deploy devices with zero-touch enrollment
- Ensure enterprise-grade security compliance
- Rapidly onboard large numbers of devices from multiple vendors
- Eliminate lost devices—and time wasted searching for them
- Track device location in real-time
- Prevent app access until user is verified
- Monitor device status, health, etc.



## Consumable inventory tracking

### Challenge:

An Ops manager at a company that ships millions of parts a month and operates multiple locations currently uses mostly manual processes to manage inventory and processes, making data accuracy a struggle. She's also considering upgrading scanners, since the devices in use aren't on the latest operating system or connectivity. She's in need of help with inventory management, and she knows it makes sense to get help at the same time with mobile computing and data management.

### Solutions:

Starting with a consultation to fully scope a solution that accounts for processes, people, and technology, she'll be set up for success with consumable inventory and IT assets bundles, along with the right hardware and devices to get inventory management under control moving forward. And because she chose IntelliTrack, she'll always have access to the latest version updates.

### Suggested add on:

In an enterprise like this one, fixed asset would be an ideal additional bundle to enable tracking and monitoring of larger assets like computers, forklifts, and other equipment all in one place, on one platform.



## Asset lifecycle management

### Challenge:

An IT service manager at a multi-location third party logistics enterprise is preparing for budget season. Sites need device counts by types and operating system versions, and they need to know which devices might be at or near end-of-life. To plan for his own budget requests, he needs details on service contract expirations, too. His sites need the same kinds of data, but for fixed assets—and as of right now, they get that information from another process.

### Solutions:

IntelliTrack with IT assets bundle simplifies managing the full lifecycle of IT assets like mobile devices, and makes it easy for this IT service manager to tap into all the data he needs on every mobile device, including OSs and service contract expirations.

### Suggested add on:

By adding fixed assets, he can also manage his sites' fixed assets in the same simplified way. Sourcing all IT asset data and fixed asset data on a single platform will streamline budget season and save time.





## Mailroom shipments & deliveries

### Challenge:

A Facilities manager at a large enterprise struggles to efficiently track incoming and outgoing mail and package deliveries across multiple departments. Delayed deliveries and misplaced packages can impact productivity and lead to customer and employee complaints.

### Solutions:

By implementing IntelliTrack's mailroom bundle, he gains real-time visibility into the mail and package flow, automates logging, and ensures accurate routing with a centralized system that simplifies operations, reduces errors, and enhances accountability.

### Suggested add on:

Adding Consumable inventory tracking ensures that packaging supplies like labels, boxes, and tapes are always in stock, supporting smooth daily mailroom activities.

## Transform inventory & asset tracking to empower better decision-making

Learn more about IntelliTrack® and how you can bring all your data together and put it to work for you—to bring clarity to complexity and empower data-informed decision-making across the enterprise.

Get Operations, IT, Facilities, Procurement, and Finance all on the same page by implementing ONE platform that can handle ALL your enterprise data in one centralized place.

Finally, a single source of truth.

### Let's talk operational excellence.

Schedule a consultation with DecisionPoint Technologies' team of experts.

[Schedule Consultation](#)



Call 1.888.412.SCAN (7226)